

# FlexTemp 2311 Universal Transmitter

## Safety instructions

This instrument is built and tested according to the current EU-directives and packed in technically safe condition. In order to maintain this condition and to ensure safe operation, the user must follow the hints and warnings given in this instruction.

During the installation the valid national rules have to be observed. Ignoring the warnings may lead to severe personal injury or substantial damage to property.

The product must be operated by trained staff. Correct and safe operation of this equipment is dependent on proper transport, storage, installation and operation.

All electrical wiring must conform to local standards. In order to prevent stray electrical radiation, we recommend twisted and shielded input cables, as also to keep power supply cables separated from the input cables. The connection must be made according to the connecting diagrams.

Before switching on the power supply take care that other equipment is not affected. Ensure that the supply voltage and the conditions in the environment comply with the specification of the device.

Before switching off the supply voltage check the possible effects on other equipment and the processing system.

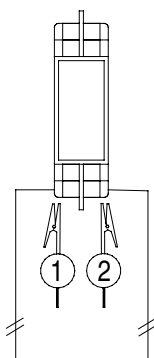


## WARNING

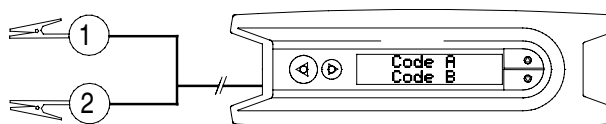
This product contains no replaceable parts. In case of malfunction the product must be shipped to Baumer for repair.

## Configuring with FlexProgrammer

Note:  
Disconnect loop supply before connecting the FlexProgrammer to FlexTemp 2311.



## FlexProgrammer 9701



Note: Ambient temperature range 0...50°C

Baumer A/S  
Runetofte 19  
8210 Aarhus V, Denmark  
Tel: +45 89317611

 **Baumer**

## Configuring with FlexProgrammer

The FlexTemp 2311 can be configured, using the 4...20 mA cable. The maximum distance depends on the cable type, resistance and capacity. We recommend to use screened cables.

To be able to configure the FlexTemp 2311 with the FlexProgrammer the dedicated software, FlexProgram, must be loaded on the PC.

The FlexProgram has help menus for all functions.

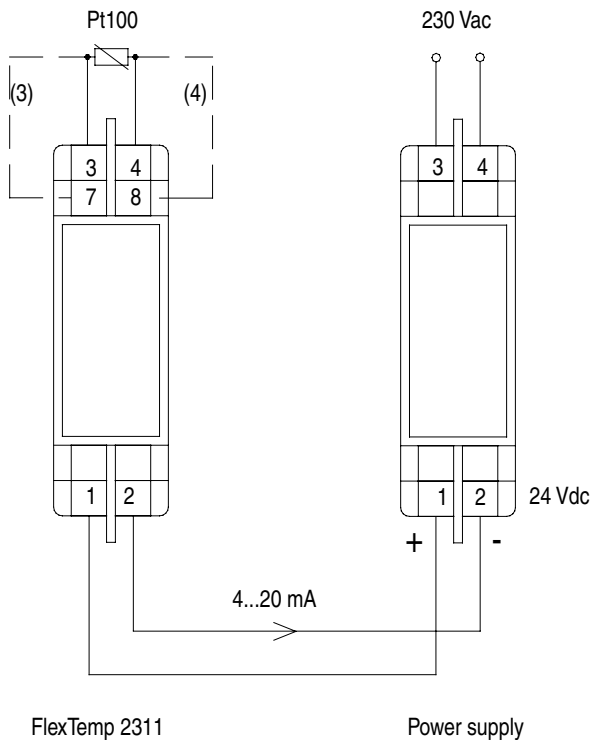
During the configuration the new data are, by means of the FlexProgrammer, transferred from the PC to the FlexTemp 2311, where they are stored in the internal memory.

The indication for a correct configuration sequence is:

The LED on the FlexTemp 2311 lights up constantly.

Note: During the first power-up after a configuration the power-on time increases to approx. 10 sec.

## Application Example



## Accessories



The FlexProgrammer 9701 is a dedicated tool to configure all Baumer configurable products.

### Type No. 9701-0001 complies:

FlexProgrammer interface unit

CD with the FlexProgram software and product drivers (DTM)

USB cable

Cable with 2 alligator clips