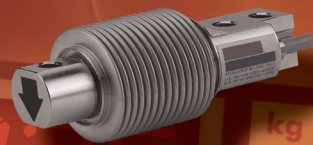
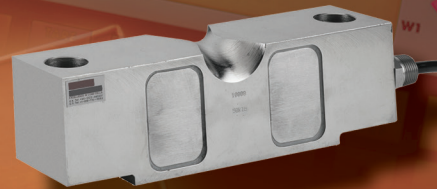
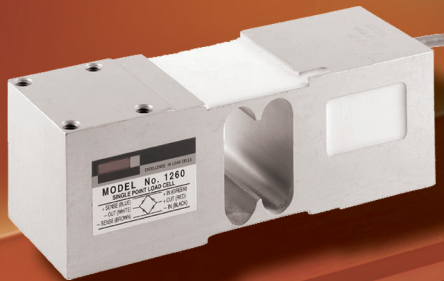



Tedea-Huntleigh Load Cells



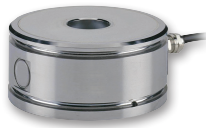
Product Overview




Product	Features	Capacities
Aluminum Single-Point Load Cells		
1002 	Anodized aluminum construction Environmental sealed IP66 Platform size 200 mm x 200 mm	0.5, 1, 2, 3, 5, 8, 15, 20 kg
1004 	Anodized aluminum construction Environmental sealed IP66 OIML certified versions available Platform size 200 mm x 200 mm	0.2, 0.3, 0.6, 1.5, 3 kg
1005 	Anodized aluminum construction Environmental sealed IP66 Platform size 70 mm x 70 mm	1, 3, 5 kg
1006 	Anodized aluminum construction Environmental sealed IP66 Platform size 200 mm x 200 mm	2, 3, 5 kg
1010/1015 	Anodized aluminum construction Environmental sealed IP65 (optional IP67) Certified to NTEP 5000d Factory Mutual approved for intrinsic safety Platform size 400 mm x 400 mm	3, 5, 7, 10, 15, 20, 30, 50, 90 kg
1022 	Anodized aluminum construction Environmental sealed IP66 OIML and NTEP certified version available ATEX certified versions available for explosive atmosphere IECEx approval available Factory Mutual approved for intrinsic safety Platform size 350 mm x 350 mm	3, 5, 7, 10, 15, 20, 30, 35, 50, 100, 150, 200 kg
1030 	Anodized aluminum construction Environmental sealed IP65 (optional IP67) OIML certified versions available Factory Mutual approved for intrinsic safety Platform size 350 mm x 350 mm	2, 3, 5, 7, 10, 15 kg
1040/1041 	Anodized aluminum construction Environmental sealed IP65 (optional IP67) Certified to OIML 3500d Certified to NTEP 5000d Factory Mutual approved for intrinsic safety Platform size 400 mm x 400 mm	5, 7, 10, 15, 20, 30, 50, 75, 100 kg
1042 	Anodized aluminum construction Environmental sealed IP66 OIML and NTEP certified versions available ATEX certified versions available for explosive atmosphere IECEx approval available Factory Mutual approved for intrinsic safety Platform size 400 mm x 400 mm	1, 3, 5, 7, 10, 15, 20, 30, 50, 75, 100, 150, 250 kg

Product	Features	Capacities
Aluminum Single-Point Load Cells (cont.)		
1242 	Anodized aluminum construction Environmental sealed IP66 Certified to OIML 6000d Certified to NTEP 5000d ATEX certified versions available for explosive atmosphere IECEx approval available Factory Mutual approved for intrinsic safety Platform size 400 mm x 400 mm	50, 100, 150, 200, 250 kg
1250 	Anodized aluminum construction Environmental sealed IP65 (optional IP67) OIML and NTEP certified versions available ATEX certified versions available for explosive atmosphere Factory Mutual approved for intrinsic safety Platform sizes: 50 - 500 kg: 800 mm x 800 mm 635 - 1500 kg: 600 mm x 600 mm	50, 75, 100, 150, 200, 250, 300, 500, 635, 750, 1000, 1500 kg
1252 	Anodized aluminum construction Environmental sealed IP66 OIML certified versions available ATEX certified versions available for explosive atmosphere IECEx approval available Factory Mutual approved for intrinsic safety Platform size 600 mm x 600 mm	75, 100, 150, 200, 250, 300, 500, 635 kg
1260 	Anodized aluminum construction Environmental sealed IP66 Certified to OIML 3000d NTEP certified versions available ATEX certified versions available for explosive atmosphere IECEx approval available Factory Mutual approved for intrinsic safety Platform size 600 mm x 600 mm	50, 75, 100, 150, 200, 250, 300, 500, 635, 660, 1000 kg
1262 	Aluminum construction Single-point 400 x 400 mm platform IP66 protection Available with metric threads	100, 200 kg
1263 	Anodized aluminum construction Environmental sealed IP66 Certified to OIML 3000d ATEX certified versions available for explosive atmosphere IECEx approval available Platform size 600 mm x 600 mm	50, 100, 150, 200, 250, 300, 500, 635 kg
1320 	Anodized aluminum construction Environmental sealed IP66 Certified to OIML 3000d Certified to NTEP 3000d ATEX certified versions available for explosive atmosphere IECEx approval available Factory Mutual approved for intrinsic safety Platform size 1200 mm x 1200 mm	1000, 1500, 2000 kg

Product	Features	Capacities
Aluminum Single-Point Load Cells (cont.)		
1330 	Anodized aluminum construction Environmental sealed IP66 OIML certified versions available Platform size 800 mm x 800 mm	500, 750, 1000 kg
Stainless Steel Single Point		
1130 	Stainless steel construction Environmental sealed IP66 OIML and NTEP certified versions available ATEX certified versions available for explosive atmosphere IECEx approval available Factory Mutual approved for intrinsic safety Platform size 400 mm x 400 mm	7, 10, 15, 20, 30, 50, 75, 100 kg
1140 	Stainless steel construction Environmental sealed IP65 (optional IP67) Factory Mutual approved for intrinsic safety Platform size 400 mm x 400 mm	15, 20, 30, 50, 75, 100, 150 kg
1142 	Stainless steel construction Environmental sealed IP66 OIML and NTEP certified versions available ATEX certified versions available for explosive atmosphere IECEx approval available Factory Mutual approved for intrinsic safety Platform size 400 mm x 400 mm	10, 15, 20, 30, 50, 75, 100, 150 kg
1510 	Stainless steel construction Hermetically sealed IP68 Certified to OIML 4000d NTEP certified versions available ATEX certified versions available for explosive atmosphere Factory Mutual approved for intrinsic safety Platform size 600 mm x 600 mm	100, 250, 500 kg
Beam Load Cells		
355 	Stainless steel construction Hermetically sealed IP68 Certified to OIML 4000d NTEP certified versions available ATEX certified versions available for explosive atmosphere Factory Mutual approved for intrinsic safety	5, 10, 20, 30, 50, 100, 200, 250, 500 kg
3410/3420 	Nickel plated steel and stainless steel construction Environmental sealed IP67 Model 3410 only: Certified to OIML 3000d NTEP certified versions available ATEX certified versions available for explosive atmosphere Factory Mutual approved for intrinsic safety Model 3410 only: OIML 3000d, ATEX for explosive atmosphere	250, 500, 1000, 2000 kg 1000, 1500, 2500, 4000, 5000, 7500, 10000 lbs

Product	Features	Capacities
Beam Load Cells (cont.)		
3520 	Stainless steel construction Environmental sealed IP67 Certified to OIML 6000d ATEX certified versions available for explosive atmosphere	500, 1000, 2000 kg
3510 	Stainless steel construction Hermetically sealed IP68 OIML and NTEP certified versions available ATEX certified versions available for explosive atmosphere Factory Mutual approved for intrinsic safety	300, 500, 750, 1000, 1200, 2000, 3000, 5000 kg 1000, 1500, 2500, 4000 lbs
4158 	Nickel plated steel construction Environmental sealed IP67 NTEP certified versions available ATEX certified versions available for explosive atmosphere Factory Mutual approved for intrinsic safety	10k, 20k, 25k, 40k, 50k, 60k, 75k lbs
Compression Load Cells		
120 	Stainless steel enclosure (includes cups, rubber ring, load adapter) Hermetically sealed IP68 Surge arrestors fitted	3, 5, 10, 20, 30, 50 †
121 	Stainless steel housing (includes cups, rubber ring, load adapter, anti-rotation collar) Hermetically sealed IP68 Surge arrestors fitted Simple to install	10, 20, 30, 50 †
122 	Stainless steel enclosure (includes load adapter) Hermetically sealed IP68	50, 68, 100, 150 †
220 	Stainless steel construction Hermetically sealed IP68 OIML certified versions available Certified to NTEP 10000d ATEX certified versions available for explosive atmosphere Factory Mutual approved for intrinsic safety	5, 10, 20, 30, 50 †

Product	Features	Capacities
Damped Load Cells		
240	 <p>Epoxy painted steel enclosure / stainless steel enclosure Environmental sealed IP66 OIML and NTEP certified versions available</p>	2, 3, 5, 7, 10, 15, 20, 30, 50 kg
1410	 <p>The first and only load cell specifically designed for use in rotary filling machines (tested up to 20 RPM) Short setting times High resistance to side loads Effective isolation of base vibrations Centrifugal forces do not affect accuracy Two mounting options Factory Mutual approved for intrinsic safety</p>	10, 20, 30 kg
1430	 <p>Stainless steel construction Insensitive to rotary dynamic forces Single point performance Rotary speed to 13 rpm at 1 m radius Sealed wash down configuration</p>	3 kg, 17.23 lbs
9010	 <p>Electroless nickel plated enclosure / stainless steel enclosure Environmental sealed IP65 Unique adjustable tare load-canceling mechanism Tested to 300 million cycles OIML certified versions available Factory Mutual approved for intrinsic safety</p>	3, 5, 7, 10, 15, 20, 30, 50, 90 kg

Product	Features	Capacities
S-Type Universal Load Cells		
614 	Aluminum construction Environmental sealed IP67 Certified to OIML 3000d	50, 100, 150, 200, 300, 500 kg
615/616 	Nickel plated construction (615) / stainless steel construction (616) Environmental sealed IP67	50, 100, 150, 200, 300, 500, 750, 1000 kg
619 	Nickel plated construction Environmental weld sealed IP67	1.5, 2, 3, 5 t
620 	Stainless steel construction Hermetically sealed IP68 Certified to OIML 3000d Certified to NTEP 5000d ATEX certified versions available for explosive atmosphere Factory Mutual approved for intrinsic safety	0.5, 1, 2, 5 t

VPG Transducers

Celltron • Revere • Sensortronics • Tedea-Huntleigh



Sales Contact

vpgt.americas@vpgsensors.com

vpgt.asia@vpgsensors.com

vpgt.emea@vpgsensors.com

OEM Customization Services:

vpgt.customsolutions@vpgsensors.com

Strain Gage Installation Services:

vpgt.bonding@vpgsensors.com



vpgtransducers.com

DISCLAIMER: The document and the products described herein are subject to change from time to time without notice and are also subject to specific disclaimers. Please visit <https://vpgsensors.com/disclaimer> for more information.

©2023 VPG - All Rights Reserved

4010-EN_Sep23